

## Fluke 1735 Three-Phase Power Logger

### Technical Data

#### Electrical load studies, energy consumption testing, and general power quality logging

The Fluke 1735 Three-Phase Power Logger is the ideal electrician or technician's tool for conducting energy studies and basic power quality logging. Set up the 1735 in seconds, with the included flexible current probes and color display. The 1735 logs most electrical power parameters, harmonics and captures voltage events.



- Record power and associated parameters for up to 45 days
- Monitor maximum power demand over user-defined averaging periods
- Prove the benefit of efficiency improvements with energy consumption tests
- Measure harmonic distortion caused by electronic loads
- Improve reliability by capturing voltage dips and swells from load switching
- Easily confirm instrument setup with color display of waveforms and trends
- Measure all three phases and neutral with included 4 flexible current probes
- View graphs and generate reports with included Power Log software
- Compact, rugged design with IP65 case, 600 V CAT III and two-year warranty

## Applications

**Load studies** – verify electrical system capacity before adding loads

**Energy assessments** – quantify energy consumption before, and after improvements, to justify energy saving devices

**Harmonics measurements** – uncover harmonic issues that can damage or disrupt critical equipment

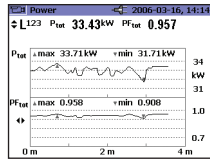
**Voltage event capture** – monitor for dips and swells that cause spurious resets or nuisance circuit breaker tripping

## Log the most common parameters

Designed to measure the most critical three-phase power parameters, the 1735 can log rms voltage, rms current, phase angle, voltage events, voltage and current THD, voltage and current harmonics up to the 50th, active power, reactive power, power factor, active energy, reactive energy, and more. With memory for up to 45 days of data, the 1735 can uncover intermittent or hard-to-find issues.

## Easy to use

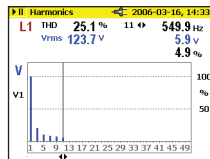
The four current probes are connected with one plug, the instrument automatically detects, scales and powers the probes. These variable range current probes are easily set to 15 A, 150 A, or 3000 A for high accuracy in nearly any application. The voltage connections are single leads, enabling easy and quick setups. The color screen provides instant confirmation that connections are correct, and then logging begins when you press the RECORD button.



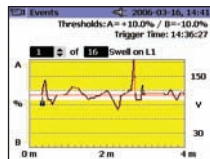
Conduct load studies for up to 45 days and view saved data on-screen or on a computer.

Energy 0:00-40 2006-03-16, 14:26  
L123 11.34tet 11.87tet -3.635tet  
kWh kVAh kVARh  
L1 3.867 4.052 -1.238  
L2 4.361 4.567 -1.399  
L3 3.108 3.254 -0.998

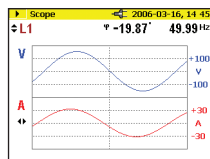
Quantify energy consumption quickly on-screen or log to memory for extended periods.



Assess voltage and current harmonics up to the 50th.



Capture voltage events using user-defined thresholds.

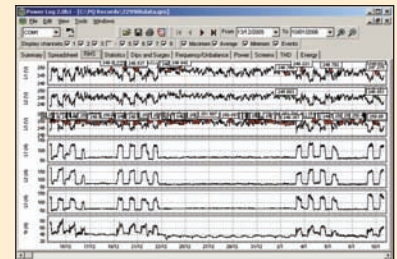


View waveforms on-screen to uncover waveform distortion and to verify correct voltage and current connections.

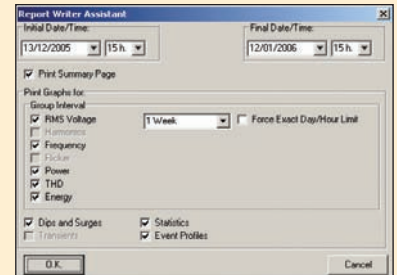


## Generate reports and view graphs with Fluke Power Log Software

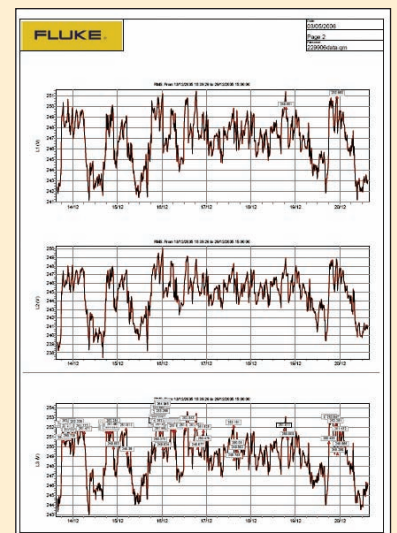
Designed to quickly view recorded data, the included Power Log software displays all recorded parameters on interactive trends. Generate a professional report with the 'Report Writer' function, or copy and paste images into report document manually.



View recorded data in simple graphs and tables.



Easily customize the report.



Create professional reports.

## Specifications

### General

<b>Display</b>	¼ VGA Graphic Color transmissive displays 320 x 240 Pixel with additional background lighting and adjustable contrast, text and graphics in color
<b>Quality</b>	Developed, designed and manufactured according to DIN ISO 9001
<b>Memory</b>	4 MB Flash memory, 3.5 MB for logging data
<b>Interface</b>	RS-232 SUB-D socket; 115.2 k Baud, 8 data bits, no parity, 1 stop bit, firmware updates are possible with the RS-232 interface (9-pole extension cable)
<b>Sample rate</b>	10.24 kHz
<b>Line frequency</b>	50 Hz or 60 Hz, user-selectable, with automatic synchronization
<b>Power supply</b>	NiMH battery-pack, with ac adapter (15 V to 20 V/0.8 A)
<b>Operation time with battery</b>	Typical > 12 hours with backlight low and > 6 hours with backlight high
<b>Dimensions</b>	240 mm x 180 mm x 110 mm (6.1 in x 4.6 in x 2.8 in)
<b>Weight</b>	1.7 kg (3.75 lb), including battery

### Ambient conditions

<b>Working temperature range</b>	-10 °C to +50 °C (+14 °F to +122 °F)
<b>Storage temperature range</b>	-20 °C to +60 °C (+32 °F to +140 °F)
<b>Operating temperature range</b>	0 °C to +40 °C (+32 °F to +104 °F)
<b>Reference temperature range</b>	23 °C ± 2 °C

**Note:** The above terms are defined in European Standards. To calculate the specification at any point in the working temperature range, use the temperature coefficient below.

<b>Temperature coefficient</b>	± 0.1 % of the measured value per °C from the reference
<b>Intrinsic error</b>	Refers to reference temperature, max. deviation is guaranteed for two years.
<b>Operating error</b>	Refers to operating temperature range, max. deviation is guaranteed for two years
<b>Climatic class</b>	C1 (IEC 654-1) -5 °C to +45 °C (+41 °F to +113 °F), 5 % to 95 % RH, no dew
<b>Housing</b>	Cyclopol shock and scratch proof thermoplast VO-type (non-flammable) with rubber protection holster

### EMC

<b>Emission</b>	IEC/EN 61326-1:1997 class B
<b>Immunity</b>	IEC/EN 61326-1:1997

### Safety

<b>Safety</b>	IEC 61010-1 600 V CAT III, double or reinforced insulation, pollution degree 2
<b>Protection</b>	IP65; EN60529 (refers only to the main housing without the battery compartment)

RMS values are measured with a 20 ms resolution.

### V-rms wye measurement

<b>Measuring range</b>	57 V/66 V/110 V/120 V/127 V/220 V/ 230 V/240 V/260 V/277 V/347 V/ 380 V/400 V/417 V/480 V ac
<b>Intrinsic error</b>	± (0.2 % of measured value. + 5 digits)
<b>Operating error</b>	± (0.5 % of m. v. + 10 digit)
<b>Resolution</b>	0.1 V

### V-rms delta measurement

<b>Measuring range</b>	100 V/115 V/190 V/208 V/220 V/380 V/ 400 V/415 V/450 V/480 V/600 V/ 660 V/690 V/720 V/830 V ac
<b>Intrinsic error</b>	± (0.2 % of m. v. + 5 digit)
<b>Operating error</b>	± (0.5 % of m. v. + 10 digit)
<b>Resolution</b>	0.1 V

## A-rms measurement

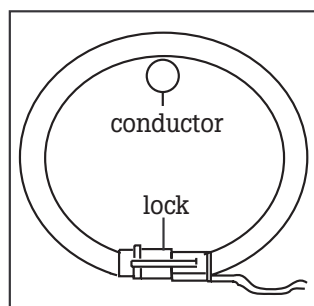
<b>Flexi set I ranges</b>	15 A/150 A/3000 A rms (at sine)
<b>Current clamp ranges</b>	1 A/10 A
<b>Resolution</b>	0.01 A
<b>Ranges</b>	150 A/3000 A and 1 A/10 A
	Intrinsic error: $\pm (0.5 \% \text{ of m. v.} + 10 \text{ digit})$
	Operating error: $\pm (1 \% \text{ of m. v.} + 10 \text{ digit})$
<b>Ranges</b>	15 A
	Intrinsic error: $\pm (0.5 \% \text{ of m. v.} + 20 \text{ digit})$
	Operating error: $\pm (1 \% \text{ of m. v.} + 20 \text{ digit})$

The errors of the current probes are not considered.

### By using Flexi-Set:

<b>Flexi Set measuring error</b>	$\pm (2 \% \text{ of m.v.} + 10 \text{ digit})$
<b>Position influence</b>	$\pm (3 \% \text{ of m.v.} + 10 \text{ digit})$
<b>CF (typical)</b>	2.83

**Note:** When using Flexi Set please make sure to position the conductor opposite to the Flexi Set-lock (refer following figure).



**Flexi Set-Lock**

## Power measurement (P – Active, S – Apparent, Q – Reactive, D – Distorting)

- Measuring range: see V rms and A rms measurement
- Power errors are calculated by adding the errors of voltage and current
- Additional error due to power factor PF
- Specified error  $x(1-|PF|)$
- Maximum range with voltage range 830 V delta-connection and 3000 A current range is 2.490 MW, higher displayed values possible when using PTs and CTs with ratio feature

<b>Intrinsic error</b>	$\pm (0.7 \% \text{ of m.v.} + 15 \text{ digit})$
<b>Resolution</b>	1 kW
<b>Operating error</b>	$\pm (1.5 \% \text{ of m.v.} + 20 \text{ digit})$

- Typical range with voltage range 230 V wye connection and 150 A current range is 34.50 KW.

<b>Intrinsic error</b>	$\pm (0.7 \% \text{ of m.v.} + 15 \text{ digit})$
<b>Resolution</b>	1 W to 10 W
<b>Operating error</b>	$\pm (1.5 \% \text{ of m.v.} + 20 \text{ digit})$

The errors of the current sensors themselves have not been considered.

## Energy measurement (kWh, kVAh, kVARh)

<b>Intrinsic error</b>	$\pm (0.7 \% \text{ of m.v.} + F \text{ variation error}^* + 15 \text{ digit})$
<b>Resolution</b>	1 W to 10 W
<b>Operating error</b>	$\pm (1.5 \% \text{ of m.v.} + F \text{ variation error}^* + 20 \text{ digit})$

\*Frequency variation error

## PF (Power factor)

<b>Range</b>	0.000 to 1.000
<b>Resolution</b>	0.001
<b>Accuracy</b>	$\pm 1 \% \text{ of full scale}$

## Frequency measurement

<b>Measuring range</b>	46 Hz to 54 Hz and 56 Hz to 64 Hz
<b>Intrinsic error</b>	$\pm (0.2 \% \text{ of m.v.} + 5 \text{ digit})$
<b>Operating error</b>	$\pm (0.5 \% \text{ of m.v.} + 10 \text{ digit})$
<b>Resolution</b>	0.01 Hz

## Harmonics

Measuring range	Up to 50 <sup>th</sup> harmonic (< 50 % of nom)
-----------------	---

### Accuracy:

V <sub>m</sub> , I <sub>m</sub> , THDV, THDI	IEC 61000-4-7:2002 Class II
V <sub>m</sub> ≥ 3 % V <sub>nom</sub>	± 5 % V <sub>m</sub>
V <sub>m</sub> < 3 % V <sub>nom</sub>	± 0.15 % V <sub>nom</sub>
I <sub>m</sub> ≥ 10 % I <sub>nom</sub>	± 5 % I <sub>m</sub>
I <sub>m</sub> < 10 % I <sub>nom</sub>	± 0.5 % I <sub>nom</sub>
THDV	for THD < 3 % ± 0.15 % at V <sub>nom</sub> for THD ≥ 3 % ± 5 % at V <sub>nom</sub>
THDI	for THD < 10 % ± 0.5 % at I <sub>nom</sub> for THD ≥ 10 % ± 5 % at I <sub>nom</sub>

V<sub>nom</sub>: Nominal voltage range.

I<sub>nom</sub>: Nominal current range.

V<sub>m</sub> and I<sub>m</sub> are measured values of harmonic m.

## Events

Detection of voltage dips, voltage swells and voltage interruptions with a 10 ms resolution and measuring error of the half period sine wave of rms.

Intrinsic error	± (1 % of m.v. + 10 digit)
Operating error	± (2 % of m.v. + 10 digit)
Resolution	0.1 V

## Ordering information

Fluke-1735 Power Logger

### Includes:

- Soft carrying case
- 4 flexible current probes (15 A/150 A/3000 A)
- Power Log software
- Voltage leads and clips
- Color localization set
- PC interface cable
- International ac adapter (115/230 V, 50/60 Hz)
- Printed English manual
- Multi-language manual CD

### Optional accessories

- MBX Clamp 1 A/10 A – 3 precision dual range current clamps (1 A/10 A) for secondary CT applications
- MBX Clamp 5 A/50 A +N – 4 precision dual range current clamps (5 A/50 A) for general applications
- C435 – Water-tight hard case with rollers



**Fluke.** *Keeping your world up and running.™*

### Fluke Corporation

PO Box 9090, Everett, WA USA 98206

Fluke Europe B.V.  
PO Box 1186, 5602 BD  
Eindhoven, The Netherlands

For more information call:  
In the U.S.A. (800) 443-5853 or  
Fax (425) 446-5116  
In Europe/M-East/Africa +31 (0) 40 2675 200 or  
Fax +31 (0) 40 2675 222  
In Canada (800) 36-FLUKE or  
Fax (905) 890-6866  
From other countries +1 (425) 446-5500 or  
Fax +1 (425) 446-5116  
Web access: <http://www.fluke.com>

©2006 Fluke Corporation. All rights reserved.  
Printed in U.S.A. 5/2006 2634932 D-EN-N Rev A